

OPzV2-250(2V250Ah)



Ritar OPzV series is Valve Regulated Lead Acid battery that adopts immobilized GEL and Tubular Plate technology to offer high reliability and performance. The Battery is designed and manufactured according to DIN standards and with die-casting positive grid and patented formula of active material OPzV series exceeds DIN standard values with more than 20 years floating design life at 25 °C ,and It is the best solution for cyclic use under extreme operating conditions.

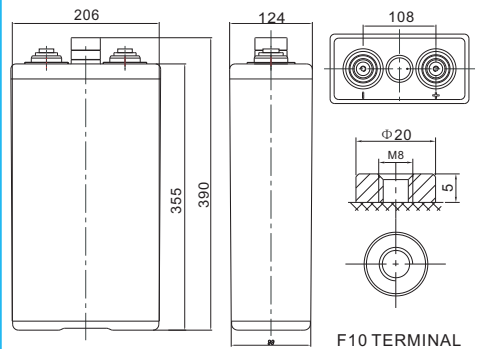


Specification

Cells Per Unit	1
Voltage Per Unit	2
Nominal Capacity	250Ah@10hr-rate to 1.80V per cell @25°C
Weight	Approx. 20.5 Kg (Tolerance±2%)
Internal Resistance	Approx. 0.90 mΩ
Terminal	F10(M8)
Max. Discharge Current	1200A (5 sec)
Design Life	20 years (floating charge)
Maximum Charging Current	50.0 A
Reference Capacity	C24 281AH C48 312AH C72 315AH C100 324AH C120 328AH C240 334AH
Float Charging Voltage	2.25 V~2.30 V @ 25°C Temperature Compensation: -3mV/°C/Cell
Cycle Use Voltage	2.35 V~2.40 V @ 25°C Temperature Compensation: -4mV/°C/Cell
Operating Temperature Range	Discharge: -40°C~60°C Charge: -20°C~50°C Storage: -40°C~60°C
Normal Operating Temperature Range	25°C±5°C
Self Discharge	RITAR Valve Regulated Lead Acid (VRLA) batteries can be stored for up to 6 months at 25°C and then recharging is recommended. Monthly Self-discharge ratio is less than 2% at 25°C.Please charged batteries before using.
Container Material	A.B.S. UL94-HB, UL94-V0 Optional.

Dimensions

Unit: mm



Length	124±1mm (4.88 inches)
Width	206±1mm (8.11 inches)
Height	355±1mm (14.0 inches)
Total Height	390±1mm (15.4 inches)
Torque Value	10~12 N*m

Constant Current Discharge Characteristics : A(25°C)

F.V/ Time	30min	1h	2h	3h	4h	5h	6h	8h	10h	20h
1.90V	123.0	97.50	68.75	52.15	42.75	36.95	33.25	25.95	22.25	11.68
1.87V	137.5	107.5	73.75	55.30	45.13	38.85	35.25	27.16	23.25	12.21
1.83V	157.5	120.0	80.00	58.93	47.50	40.55	36.50	28.37	24.25	12.73
1.80V	175.0	130.0	83.00	60.63	48.45	41.50	37.50	29.10	25.00	13.13
1.75V	195.0	139.3	86.75	63.05	49.25	42.50	38.25	29.59	25.50	13.39
1.70V	215.0	143.8	89.25	64.28	50.11	43.00	38.75	29.83	25.75	13.52
1.65V	221.8	152.8	92.25	66.00	50.83	43.50	39.25	30.07	26.00	13.65
1.60V	231.3	158.0	95.75	68.75	52.25	44.25	39.75	30.31	26.25	13.78

Constant Power Discharge Characteristics : WPC(25°C)

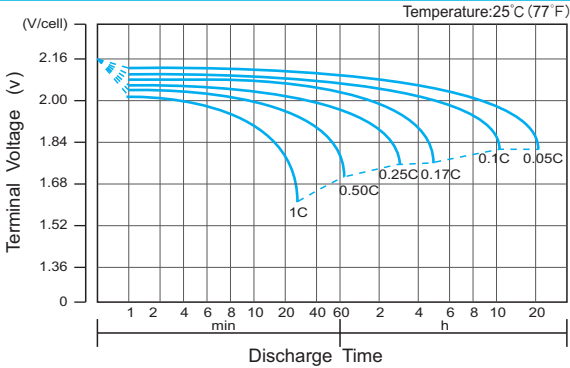
F.V/ Time	30min	1h	2h	3h	4h	5h	6h	8h	10h	20h
1.90V	235.4	187.2	132.9	101.0	83.67	72.75	65.75	51.90	45.35	23.81
1.87V	259.0	203.3	141.0	105.8	88.19	76.25	69.50	54.08	47.29	24.83
1.83V	290.2	221.6	150.0	111.3	92.46	79.25	71.75	56.02	48.99	25.72
1.80V	317.1	236.4	155.0	113.8	94.22	81.00	73.50	57.23	50.20	26.35
1.75V	344.0	247.0	160.0	117.3	95.48	83.00	74.75	57.96	50.93	26.74
1.70V	368.8	249.5	164.1	119.4	96.98	83.75	75.50	58.44	51.41	26.99
1.65V	375.1	260.5	168.6	121.9	98.24	84.50	76.25	58.93	51.65	27.12
1.60V	379.6	268.6	172.6	125.9	100.8	85.25	76.75	59.17	51.90	27.24

(Note) The above characteristics data are average values obtained within three charge/discharge cycle not the minimum values.

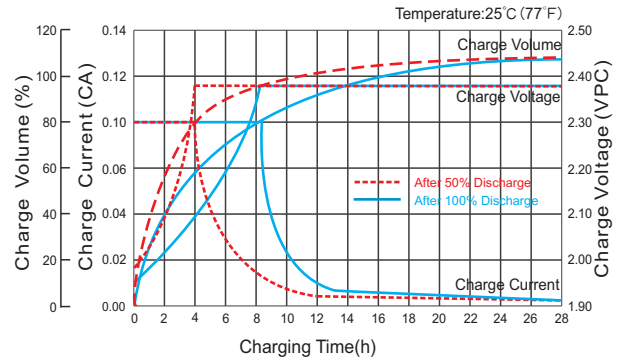
OPzV2-250(2V250Ah)



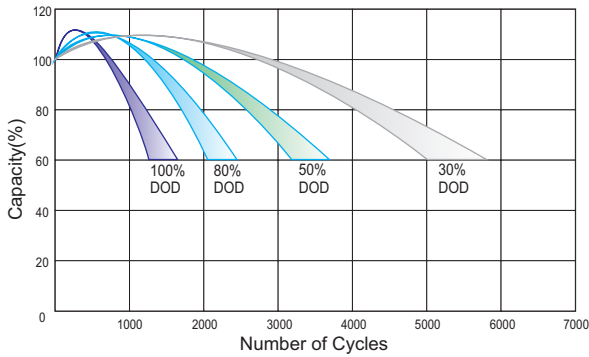
Discharge Characteristics Curve



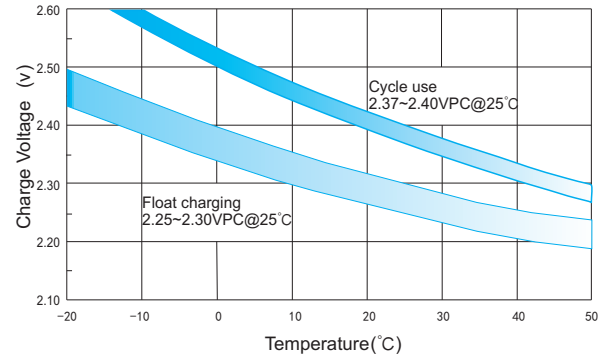
Charge Characteristic Curve for Cycle Use(IU)



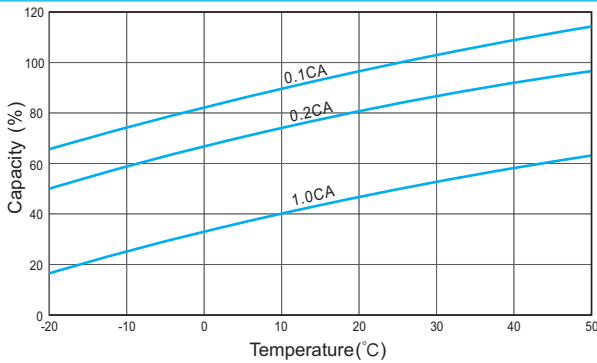
Cycle Life in Relation to Depth of Discharge



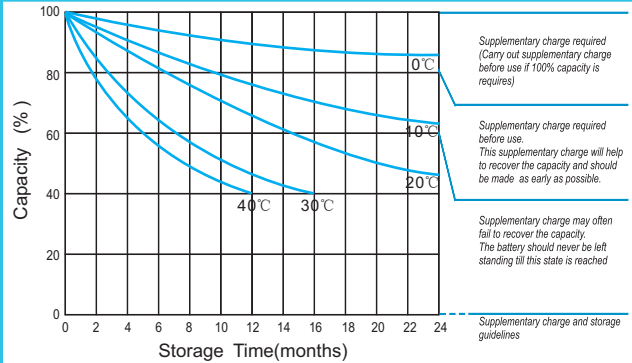
Relationship Between Charging Voltage and Temperature



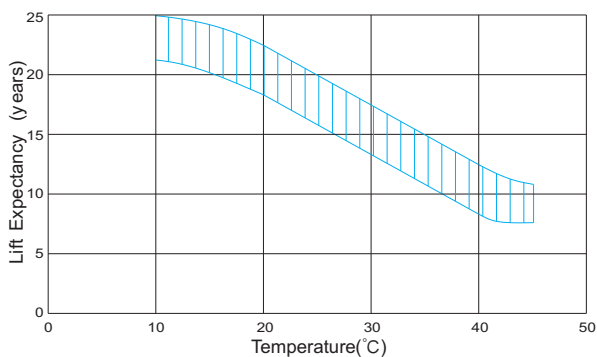
Temperature Effects on Capacity



Storage Characteristics



Effect of Temperature on Long Term Life



Relationship of OCV And State of Charge(20°C)

